

# DESKTOP COLOR LABEL PRINTERS VP610 / VP660



## SCALE

Dynamically,  
Profitably,  
Confidently.



High Print  
Speed



Expressive  
Color



High-Capacity  
250ml  
Ink Tanks

## ONE OF THE BEST PRICE PERFORMANCE PRINTER IN ITS CLASS

The VP610/VP660 helps streamline your labeling workflow, reduces inventory and waste. These printers are simple to use and deliver up to 1,800 (6x4") in 10 min. Whether you need a hundred or ten thousand labels/day, you can depend on the VP610/VP660 to deliver every time.

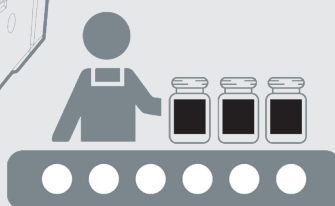
### Key benefits:

- ✓ High Speed - Print 1,800 (6x4") labels in less than 10 min.
- ✓ Brilliant color quality Image
- ✓ Large individual ink tanks
- ✓ Enhanced water-resistant inks (with VP660)
- ✓ Food safe & Environmentally friendly dye ink formula

## STREAMLINE YOUR LABELING WORKFLOW FROM START TO END



Concept



Production



Delivery

Asia Office  
Email: [asia@vipcolor.com](mailto:asia@vipcolor.com)  
Phone: +65 6482 1755  
Web: [vipcolor.com](http://vipcolor.com)

China Office  
Email: [asia@vipcolor.com](mailto:asia@vipcolor.com)  
Phone: +86 21 3898 4898 x 8210  
Web: [vipcolor.com/zh](http://vipcolor.com/zh)

Europe Office  
Email: [info@vipcoloreurope.com](mailto:info@vipcoloreurope.com)  
Phone: +34 93 588 3018  
Web: [vipcoloreurope.com](http://vipcoloreurope.com)

US Office  
Email: [sales@vipcolor.com](mailto:sales@vipcolor.com)  
Phone: 1 800 404 3185  
Web: [vipcolor.com](http://vipcolor.com)

# DESKTOP COLOR LABEL PRINTERS VP610 / VP660



## TECHNICAL SPECIFICATIONS

|                     | VP610  | VP660   |
|---------------------|--|---|
| Print speed         | 6 and 12 ips (154 and 305 mm/second)   |   |
| Print resolution    | 1,600 x 1,600 dpi and 1,600 x 800 dpi  |   |
| Print width/Length  | 2" - 8.5" (51 - 216 mm) / Up to 40" (1.016 m)  |   |
| Comm ports          | USB 2.0, 10/100Base-T, GPIO  |   |
| Inks                | Five individual 250ml dye ink cartridges   | Five individual 250ml (Enhanced water resistant) dye ink cartridges |
| Time to first label | Less than 10 seconds   |   |
| Print modes         | Roll-to-Cut, Roll-to-Roll, Print & Hold  |   |
| Barcode PQ          | Grade B or better for<br>• 1D barcode (Code 39) with 10 mils bar width<br>• 2D barcode (PDF417) with 10 mils cell size |   |
| Electrical          | Universal power supply - 100-240 Vac, Peak current < 4A  |   |
| Temperature         | Operation: 15 to 35°C at RH 20 -80%; Storage: -5 to 50°C   |   |
| Safety/ Compliant   | FCC Part 15, Subpart B, Class A (US), cULus, IEC-62368-1, RCM, CCC, UKCA mark, Singapore Safety Mark                   |   |
| User Interface      | Embedded web server, Backlit LCD control panel in 9 languages, LED for warning and readiness indication                |   |
| Acoustics           | Sound pressure level < 60 dBA  |   |
| Printer Driver      | Windows 10   |   |
| Supported Software  | All major Windows based label and graphic design applications like Adobe Illustrator, Nicelabel, Bartender.            |   |
| Sensor type         | Gap, Reflective sensor for black mark  |   |
| Media type          | Roll (continuous, die-cut), fan-fold   |   |
| Media thickness     | 0.1 - 0.3 mm   |   |
| Roll diameter       | 8" (203 mm) OD with 3" (76 mm) core  |   |
| Supported media     | Glossy, matte, synthetics  |   |
| Others              | Rugged metal casing, automatic cutter, patented print & hold mechanism   |   |
| Warranty            | 1 year warranty or 5M inches, whichever earlier  |   |

Label Printer comes with unwinder

Weight : 66 lbs (30kg)



- High Speed Print
- Brilliant color quality Image
- Fine text, barcode and variable data



## Print all you need in one-step!

Brilliant color images

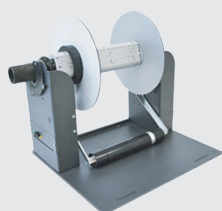
We recommend the VP660 (with Enhanced water-resistant inks) for product labels that are exposed to moisture. (e.g. chilled/refrigerated food)



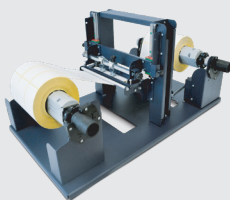
Fine text, barcode

Variable data

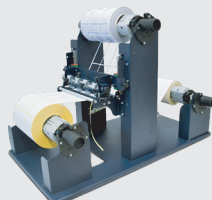
## ACCESSORIES



Re-winder



Label Slitter



Matrix Remover & Slitter



Scan the QR code to learn how Babe Farms overcame its labeling challenges. Innovate and develop new products faster than ever with high-quality labels printed with the VIPColor printer.



SCAN ME to schedule a demo today!