

# DESKTOP COLOR LABEL PRINTERS VP700 / VP750



## HIGH VOLUME Color Label Production



High Print  
Speed



Expressive  
Color



High-Capacity  
250ml  
Ink Tanks

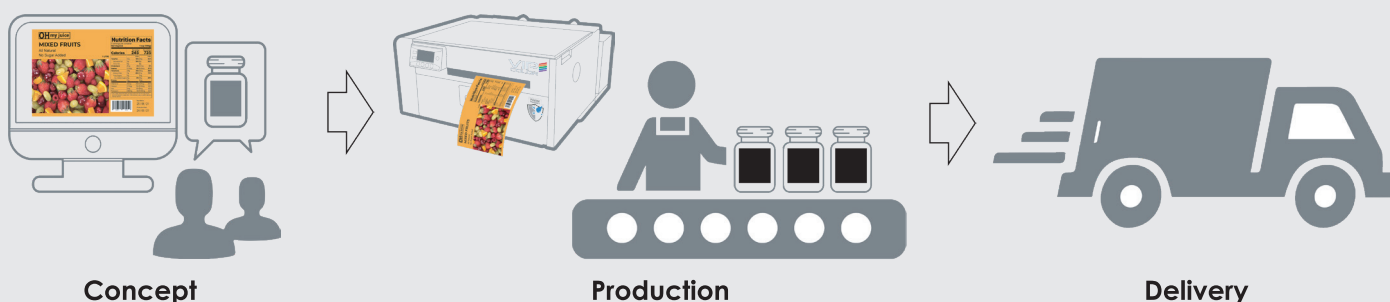
### FAST AND ON DEMAND COLOR LABEL PRINTING WITHOUT COMPROMISE

The VP700/750 color label printer is ideal for short to medium print requirements. Combined with its ability to print vibrant colors at up to 60 feet per second on a wide range of paper, polyester, polypropylene and vinyl label stocks makes the VP700/750 the perfect solution for printing labels in-house, on time and on your terms.

#### Key benefits:

- ✓ High Speed - Print 1,800 (6x4") labels in less than 10 min.
- ✓ Brilliant color quality Image
- ✓ Large individual ink tanks
- ✓ Enhanced water-resistant inks (with VP750)
- ✓ Food safe & Environmentally friendly dye ink formula

### STREAMLINE YOUR LABELING WORKFLOW FROM START TO END



**Asia Office**  
Email: [asia@vipcolor.com](mailto:asia@vipcolor.com)  
Phone: +65 6482 1755  
Web: [vipcolor.com](http://vipcolor.com)

**China Office**  
Email: [asia@vipcolor.com](mailto:asia@vipcolor.com)  
Phone: +86 21 3898 4898 x 8210  
Web: [vipcolor.com/zh](http://vipcolor.com/zh)

**Europe Office**  
Email: [info@vipcoloreurope.com](mailto:info@vipcoloreurope.com)  
Phone: +34 93 588 3018  
Web: [vipcoloreurope.com](http://vipcoloreurope.com)

**US Office**  
Email: [sales@vipcolor.com](mailto:sales@vipcolor.com)  
Phone: 1 800 404 3185  
Web: [vipcolor.com](http://vipcolor.com)

# DESKTOP COLOR LABEL PRINTERS VP700 / VP750



## TECHNICAL SPECIFICATIONS

	VP700	VP750
Print speed	6 and 12 ips (154 and 305 mm/second)	
Print resolution	1,600 x 1,600 dpi and 1,600 x 800 dpi	
Print width/Length	2" - 8.5" (51 - 216 mm) / Up to 40" (1.016 m)	
Comm ports	USB 2.0, 10/100Base-T, GPIO	
Inks	Five individual 250ml dye ink cartridges	Five Individual 250ml (Enhanced water resistant) dye ink cartridges
Time to first label	Less than 10 seconds	
Print modes	Roll-to-Cut, Roll-to-Roll, Print & Hold	
Barcode PQ	Grade B or better for <ul style="list-style-type: none"> <li>• 1D barcode (Code 39) with 10 mils bar width</li> <li>• 2D barcode (PDF417) with 10 mils cell size</li> </ul>	
Electrical	Universal power supply - 100-240 Vac, Peak current < 4A	
Temperature	Operation: 15 to 35°C at RH 20 -80%; Storage: -5 to 50°C	
Safety/ Compliant	FCC Part 15, Subpart B, Class A (US), cULus, IEC-62368-1, RCM, CCC, UKCA mark, Singapore Safety Mark	
User Interface	Embedded web server, Backlit LCD control panel in 9 languages, LED for warning and readiness indication	
Acoustics	Sound pressure level < 60 dBA	
Printer Driver	Windows 10	
Supported Software	All major Windows based label and graphic design applications like Adobe Illustrator, Nicelabel, Bartender.	
Sensor type	Gap, Reflective sensor for black mark	
Media type	Roll (continuous, die-cut), fan-fold	
Media thickness	0.1 - 0.3 mm	
Roll diameter	8" (203 mm) OD with 3" (76 mm) core	
Supported media	Glossy, matte, synthetics	
Others	Rugged metal casing, automatic cutter, patented print & hold mechanism	
Warranty	1 year warranty or 5M inches, whichever earlier	

Print all you need in one-step!

Brilliant color images

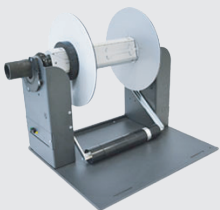
We recommend the VP750 (with Enhanced water-resistant inks) for product labels that are exposed to moisture. (e.g. chilled/refrigerated food)



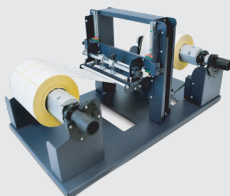
Fine text, barcode

Variable data

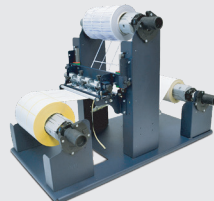
## ACCESSORIES



Re-winder



Label Slitter



Matrix Remover & Slitter



Scan the QR code to learn how Babe Farms overcome its labeling challenges. Innovate and develop new products faster than ever with high-quality labels printed with the VIPColor printer.



SCAN ME to schedule a demo today!